

CLK

# CLK

## LED Light Bar



Daylight  
Natural White

IP66G/67G/69K

M-12 Daisylink



(Cable not included)

## Water, Oil and Chemical Resistant LED Light Bar with an Illuminance of 2,100lx. (Measurement based on CLK6S-24AG-CD)

### FEATURE

Attained the IP69K standard for the meat/food processing, beverages and medicine manufacturing industries which demands the waterproofing performance. It also corresponds to IP66G/67G standards.

Special design to reduce "Blinding Light" effect, reducing the risk of retinal damage (EN62471-2 for Photobiological Safety of Lamps and Lamp Systems).

The product lineup includes three sizes (200mm, 300mm, 600mm), two colors (Daylight, Natural White), and different series (Side-exit Cable; M12 Quick-disconnect; Aluminum Alloy and Stainless Steel Body) for various applications.

The operating temperature range from -40°C to +60°C allows installation in sub-freezing temperatures, such as walk-in freezers.

Slim Profile

Corresponds to Europe's RoHS Directive.

Conforms to CE requirements.

UL Listed (File No. E306141).

Passed IEC 62471

Specifications/Material		Water and Oil Resistance/Aluminum Alloy						Water and Chemical Resistance/SUS316 Stainless Steel		
Lens Material		Tempered Glass						Specially-treated Lens $\diamond$		
Model		2S-AG	3S-AG	6S-AG	3C-AG	3CL-AG	6C-AG	6CL-AG	3C-SG	3C-SA
Lens Size		200mm	300mm	600mm	300mm		600mm		300mm	
LED Color	Daylight: 6,500K: CD	●	●	●	●	●	●	●	●	—
	Natural White: 5,000K: CN	△	●	△	●	●	●	—	—	●
Center Illumination (@1m)		820lx	1,200lx	2,100lx	1,200lx		2,100lx		1,200lx	
Connection Type		Side-exiting Cable, L=0.5m		M12 Quick Disconnect	M12 Daisy Link	M12 Quick Disconnect	M12 Daisy Link	M12 Quick Disconnect		
Power Consumption		8.4W	12.5W	25W	12.5W		25W		12.5W	
Rated Voltage		DC24V (Polarized)								
Operating Temperature Range		-40°C - +60°C (RH 90% or less)								
Protection Rating		IP 66G/67G (IEC 60529)/IP69K (DIN 40050 Part 9)								

△ : Inquire before Ordering

◇ : Specially-treated lens has three layers embedded; PMMA, Shatter-proof Film, Tempered Glass

Model Code

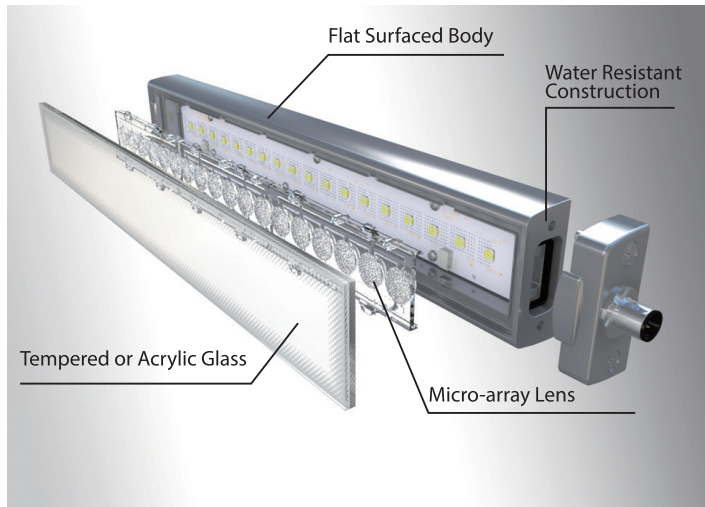
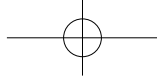
Illumination Area Size  
2: 200mm 3: 300mm 6: 600mm

Model **CLK**   -24  -

LED Color  
CD: Daylight, CN: Natural White

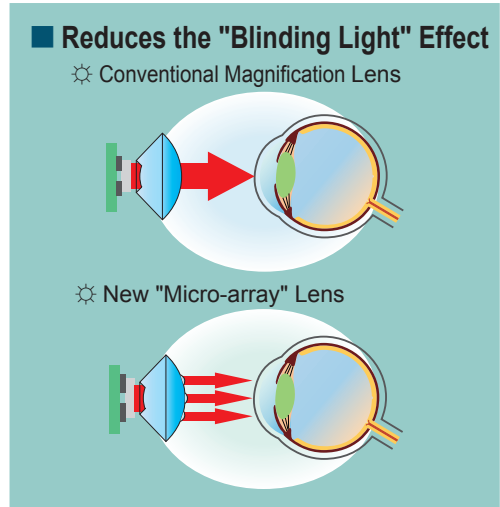
Wiring Method  
S: Side-exiting Cable C: M12 Cable CL: M12 Daisy Link

Body Material AG: Aluminum & Glass  
SG: Stainless Steel & Glass  
SA: Stainless Steel & Special Lens



### Angled Body and Flat Surface

The side body angle was designed to prevent dirt accumulation, and for water and oil to roll off the surface. The LED lens retains a simple flat-surface for lighting and to help when wiping it down.



### Reduces the "Blinding Light" Effect

This design conforms to the Photobiological Safety of Lamps and Lamp Systems (Compliance :EN62471- 2) in the Exempt Risk Group, which determines that no immediate retina damage is done.



Standard



Option



Option

### One-touch Installation

Just sliding the body onto the bracket makes attachment easy; and it locks in place with a locking screw (which is hidden from the front). (Aluminum Body Only)

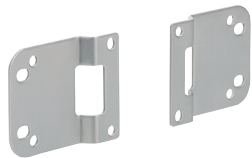
### Angle Adjustment Bracket

The Worklight can be freely adjusted up to 60° up and down from the center. (With a scale at 10° step marks and screws to lock it into place.)

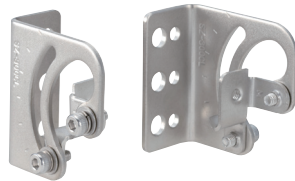
### Surface-mounting Bracket

A space-saving flush-mount bracket. (Limited board thickness and lead wire specification of 6mm or less; M12 connector specification of 3mm or less) (Models 3 S-AG/3 C-AG Only)

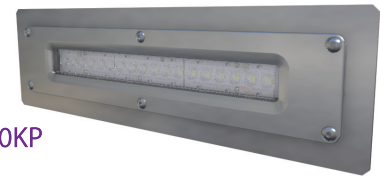
### CLK-001



### SZ-320KS



### SZ-330KP



### M12 Quick Disconnect

4-wire M12 Socket Cable, 5m (No. 1536308)  
4-wire M12 SUS Socket Cable, 5m (No. 1552447)



Manufacturer: Phoenix Contact Corp

### Daisy Link at a maximum of 5 Units

4-wire M12 Link Cable, 0.6m (No. 1518892)  
4-wire M12 SUS Link Cable, 0.6m (No. 1552638)



Manufacturer: Phoenix Contact Corp

## Product Lineup

Specifications	Side-exiting Cable Series (S)	M12 Quick Disconnect Series (C)	M12 Quick Disconnect Daisy Link Series (CL)	Stainless Steel (SUS) Body Series (C-SG/C-SA)
Length				
200 mm	2S 6500K 5000K			
300 mm	3S 6500K 5000K	3C 6500K 5000K	3CL 6500K 5000K * Up to 4 units	3C 6500K 5000K SUS & Special Lens
600 mm	6S 6500K	6C 6500K 5000K	6CL 6500K 5000K * Only 1 Unit	